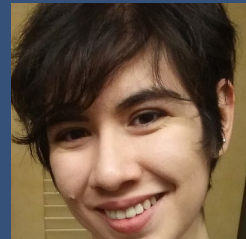


NIH NATIONAL CANCER INSTITUTE



## Danielle A. Duarte

Postbaccalaureate  
DCEG Shady Grove



### Education

B.S., Biology and Psychology, University of New Mexico

### Scientific Interests

- Environmental epidemiology
- Occupational epidemiology

### I applied to iCURE because...

I applied to iCURE because I want to understand how to leverage geographic information systems to display and analyze environmental exposure and health consequences. This will help me in my long-term goal, which is to conduct research that ultimately will result in the development of effective interventions to reduce environmental health disparities in underserved or underrepresented populations.

### My favorite traditions/holidays...

My favorite holiday is Halloween.

### My hometown is...

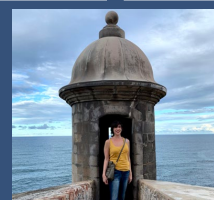
I was born in and grew up in Albuquerque, New Mexico.

### In my spare time, I enjoy...

- I enjoy learning new languages.
- I enjoy baking.
- I enjoy taking long walks with my family.

### A few of my favorite things...

- Favorite book: *Grotesque* by Natsuo Kirino
- Favorite food: Stuffed sopaipilla
- Favorite season: Fall



NIH NATIONAL CANCER INSTITUTE



## Rena Jones, PhD

Investigator  
Occupational and Environmental Epidemiology  
Branch  
DCEG Shady Grove



### Words to live by...

*Perfection is the enemy of progress.*

### What is your favorite thing about working at NCI?

I really enjoy working with such bright and talented people in a setting where we can do great science that so clearly serves public health. Mentoring is an incredibly rewarding component of what I do.

### In my spare time, I enjoy...

I love spending time outside with my family and dogs.

### My favorite traditions/holidays...

My favorite time of the year is December. I love the cooler weather and festive decorations that celebrate diverse cultures.